

Winter Wear Designs

Petit Pan

Knit Top with Woven Collar
size 2-4



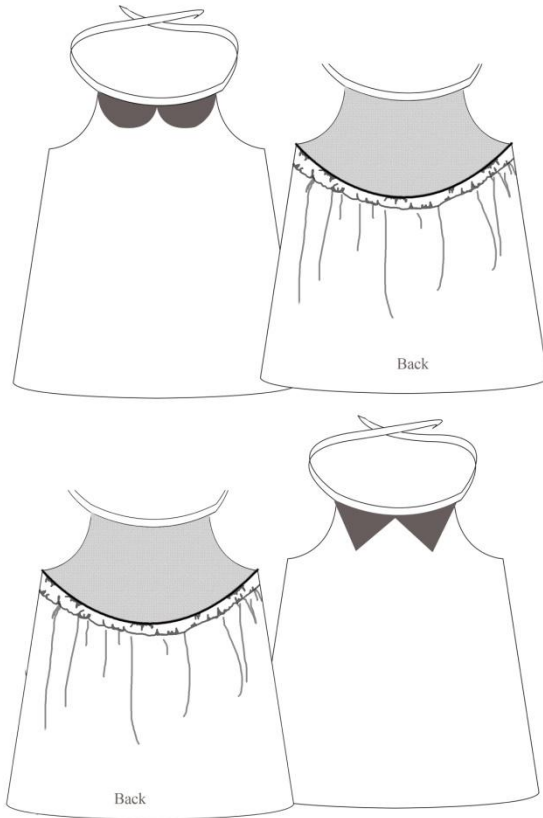
This pattern is copyright by Winter Wear Designs for exclusive distribution at Pattern Revolution - no reproduction, copying or distribution of this document or pattern are allowed in any form. You may use this pattern freely to create items for personal use or to sell for small businesses.

4/30/2014

The Petit Pan Top is designed for a knit bodice and woven collar. There are two collar options, peter pan style, or triangle style. You could also choose to leave the collar off all together.

This is a great pattern for upcycling old T shirts. If You choose to Upcycle, use the marking on the pattern to line up with the bottom of your existing hem on the shirt.

Have fun adding embellishments, like buttons or lace to the front for a custom look.



Suggested Materials:

-This pattern will work with any knit with 30% or more stretch. A lightweight jersey will give you a flowy summer feel, and a thicker interlock could be paired with a cardigan for fall.

- For the Woven Collar: quilting cotton, linen, eyelet, lace, suiting, etc...
You may use the same fabric for main and lining, or coordinating fabrics.

- For the double fold Bias Tape: Store bought bias tape, or make your own out of cotton/linen/suiting. etc...

Yardage Requirements:

Bodice - 1/2 yard 60in wide

Collar - 2 charm squares (less than 1/8 yard)

Bias - 45 inches pre made or 1/4yard to make bias.

Tips for Working with Knit:

- Make sure you are using a stretch/ball point needle
- Use a long straight stitch unless otherwise indicated
- For hemming use a long straight stitch, twin needle, or coverstitch
- Do not pull your fabric as you sew.
- Press well with steam to help your fabric regain its original shape
- *if you are using a very thin knit - use a walking foot or tissue paper to keep the fabric from bunching up

Upcycling Tips:

- This is a great project to reuse old T-shirts, if you are reusing an existing hem, make sure to use the guide mark on the pattern to match to the existing hem.
- If your shirt has an image you want to preserve, make sure to line up the pattern so the image is centered on the front of the bodice.
- Consider embellishing your upcycle with a painted pattern, stencil, iron on transfer or bedazzlement.

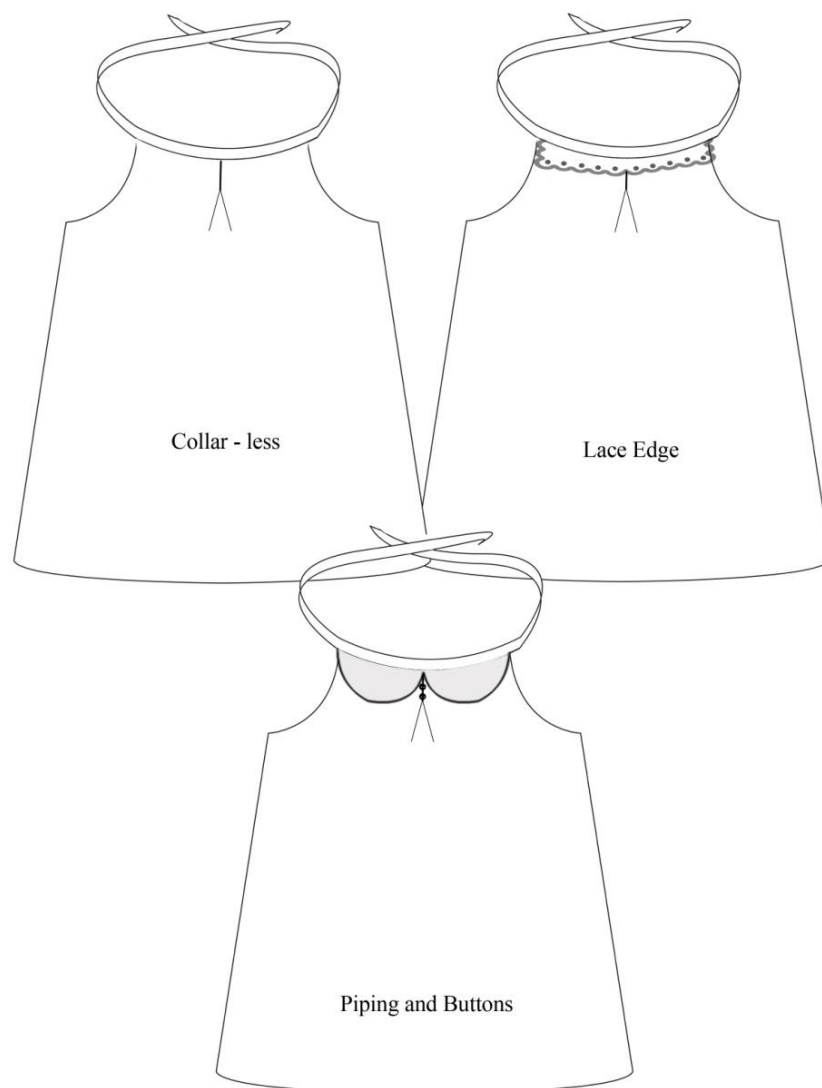
Size	Chest	Height	Waist
2	20 in	34in	20in
3	21.5in	37.5in	20.5in
4	22.5in	40in	21in

Size	Elastic (3/8in)	Binding	Bias length *if you are making your own bias, cut it 1.5in wide*
2	9 in	1.5 in x 24 in	40 in
3	9.5 in	1.5in x 25.25in	42 in
4	10in	1.5 in x 26.5 in	44 in

This pattern CAN be made in woven fabric for the bodice. If you are between sizes, size up!

- Your binding piece must be cut on the bias
- You will need to finish the bodice seams with either a serger or a zig zag stitch.
- All other construction is the same.

Inspiration for Alternate Options:



Pattern Cutting:

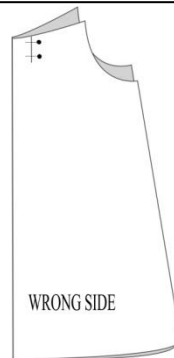
- Cut Each pattern piece -
 - 1 Front on Fold
 - 1 Back on Fold
 - 4 of collar of choice (2 right, 2 left)
 - 1 binding 1.5 inches by length in chart for your size
 - 1 double fold bias tape strip, either store bought, or 1.5 inches by the length in the chart for your size



Construction:

Bodice construction -

1. Fold Front right sides together, sew along box pleat line
2. Press Box Pleat Open
3. Sew Front and Back side seams with **1/4inch Seam Allowance**, right sides together



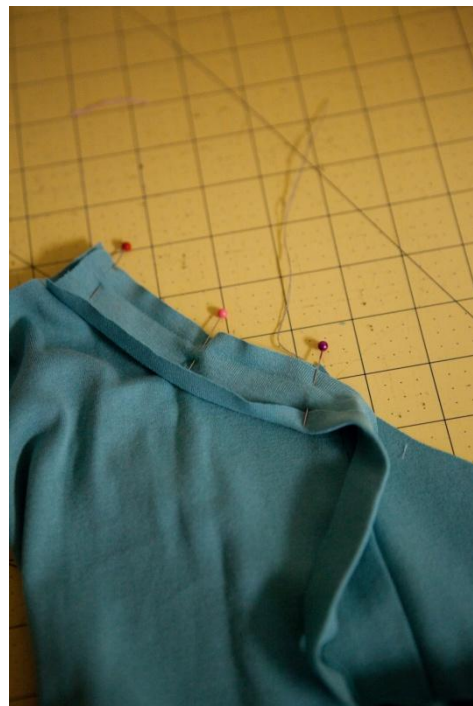
4. Press Seams towards the Front



5. Prepare your binding by Pressing the two long edges into the center
*the same way you would make single fold bias tape



6. Attach binding, starting at the edge of the front neck line, pin along the back and end at the edge of the opposite side of the front neck line.
Make sure your Fabrics are RST



7. Sew binding along the crease



6. Press SA up towards the binding



7. Turn binding in towards the inside of your bodice and press



Elastic Casing -

1. Starting at the side seam, Edge Stitch along the inside edge of the binding along the BACK section, ending at the other side seam.



2. Attach your Elastic to a safety pin or bodkin and thread the elastic through the casing.



- Secure each end of your elastic in place with about 1/2 inch overhang by stitching in the ditch of your side seam with a matching thread.



- Finish your binding from the back to the front neck line on each side.



Collar -

- Sew 2 collar pieces RST with **1/8 inch Seam Allowance** from point to point along the large curve for the Peter Pan Style, and along the two straight edges for the Triangle collar.



2. For the triangle collar notch your point

For the Peter Pan Collar, clip your curve

3. Turn right side out and press well



3. Top stitch along the curve 1/8 inch from the edge

4. Repeat for the other side of the collar



5. Overlap your two collar pieces 1/2 inch and baste together



Attaching Collar and Bias Strap -

1. line your collar up with the top edge of the front neck line. (match the center of the collar with the center of the box pleat, the edges of the collar will overhang slightly) - You are laying the collar on TOP of the right side of the front.

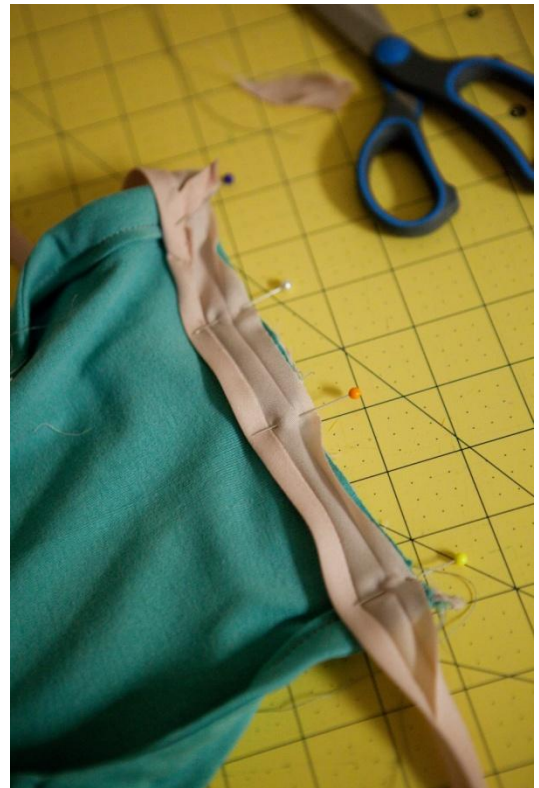


2. Baste your collar in place 1/8 inch from the edge



3. Take your double fold bias tape and mark the center.

4. Open one side of the tape and pin the raw edge to the WRONG side of your Front neckline, make sure to match the center point of the bias tape to the center point where your collar overlaps.



5. Stitch along the crease from one edge of the neck line to the other

6. Fold your bias tape around to the front and press well

7. Pin the bias tape in place

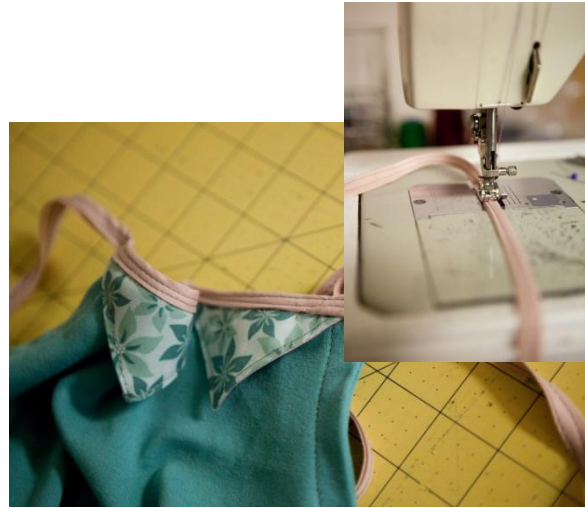


8. Start at one end of the bias tape and sew the 2 folded edges together 1/8 inch from the edge towards the center.

9. Stitch all the way to the opposite end.



10. Stitch the opposite edge of the bias tape (the one fold side) 1/8 inch from the edge.



2. Tie your ends in knots and cut the overhang at an angle.



Hemming the Shirt:

1. Fold the bottom edge of the shirt up to the wrong side 1/4 inch and press
2. Fold again 3/4 inch to the wrong side and press
3. Stitch along the edge of the fold using a long straight stitch, a double needle, or a coverstitch.

VOILA!!!! You have Created a new top!



If you have any questions about this pattern or the construction, please contact me :

Suzannewinterphotography@gmail.com

Please share your images with us on Facebook, instagram, and twitter #WWPetitPan

Sample Images:

